

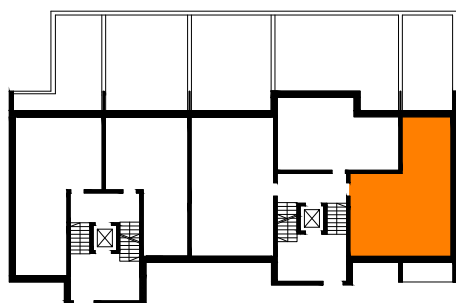
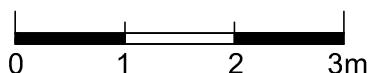
SPÓŁDZIELNIA MIESZKANIOWA "PROJEKTANT"

BUDYNEK NR 37, OS. SŁONECZNY STOK, RZESZÓW

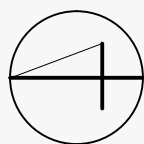
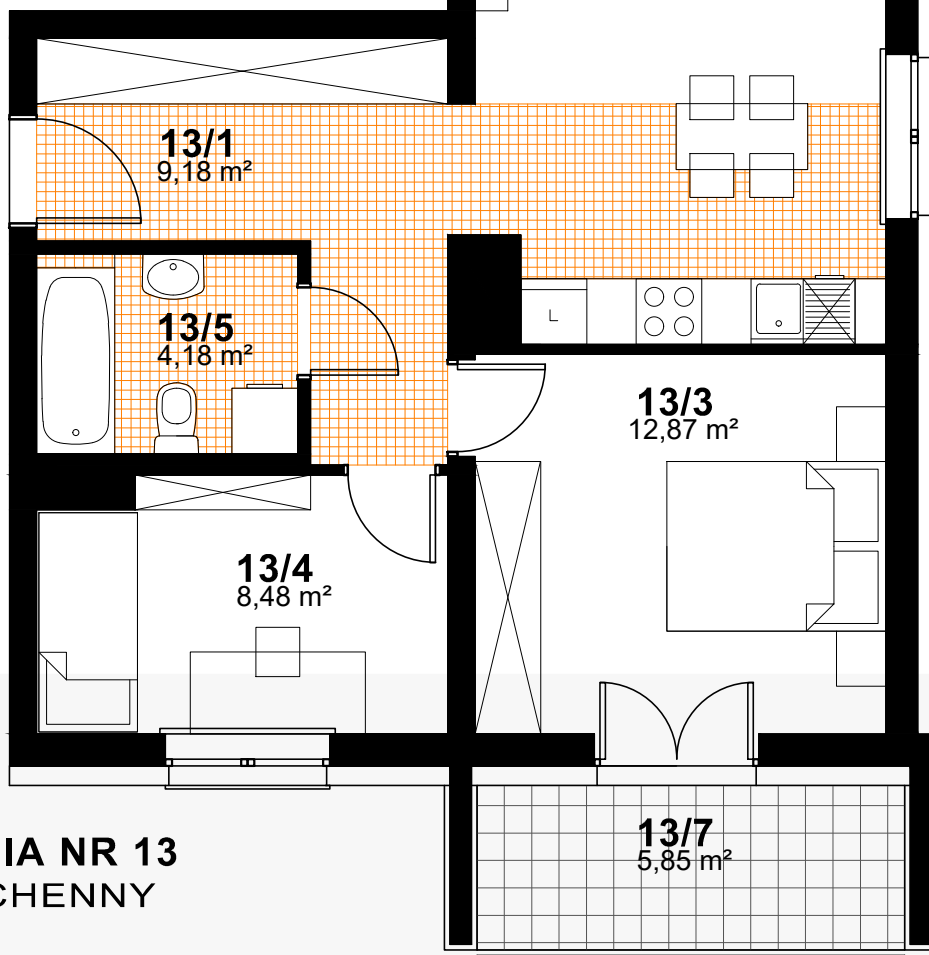
| nr pom. | nazwa pomieszczenia | pow.- m ² |
|---------|--------------------------------|----------------------|
| 13/1 | hol | 9,18 |
| 13/2 | pokój dzienny + aneks kuchenny | 26,37 |
| 13/3 | sypialnia | 12,87 |
| 13/4 | sypialnia | 8,48 |
| 13/5 | łazienka | 4,18 |

RAZEM - 61,08m²

| | | |
|------|--------|-------|
| 13/6 | taras | 28,43 |
| 13/7 | balkon | 5,85 |



M.NR 13



PARTER
KONCEPCJA MIESZKANIA NR 13
3 POKOJE + ANEKS KUCHENNY
POW. - **61,08 m²**